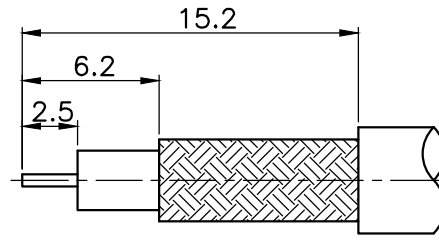
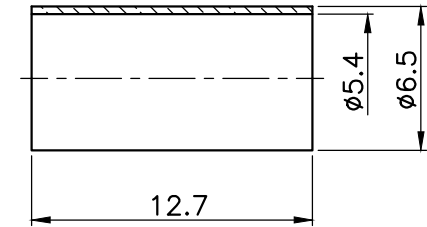
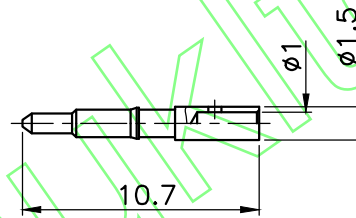
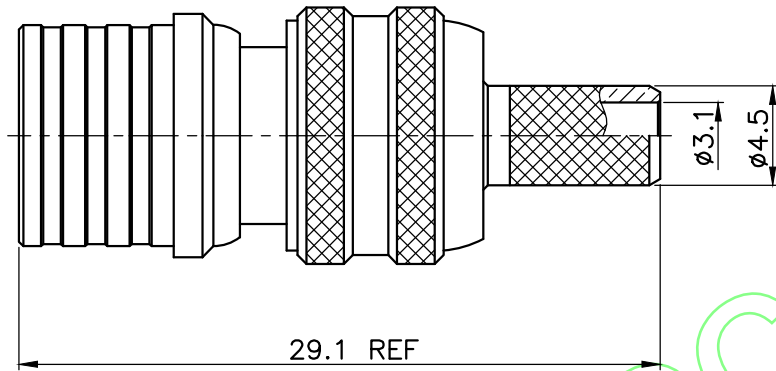


REVISIONS		
ISS	DESCRIPTION	DATE

RoHS COMPLIANT



RECOMMENDED
CABLE STRIPPING DIM'S



1. CRIMPED FERRULE
HEX CRIMP SIZE .217"

TITLE: QMA MALE CRIMP (FOR RG58/U)	APRD:	UNLESS OTHERWISE SPECIFIED TOLERANCES 0.5-6 = ±0.2 >6-30 = ±0.4 >30-120 = ±0.6 >120-315 = ±1 >315-1000 = ±1.6 ANGLES = ±5°	O RING	SILICONE	RED
	CHKD:		FERRULE	BRASS	NICKEL
	DR:		CONTACT PIN	BRASS	GOLD
PART NO: QLAPCR58	DATE: 08/16/18"	UNIT: mm	BODY	BRASS	NICKEL
DRAWING NO: 055	SHEET: .	SCALE: 3/1	BODY	BRASS	NICKEL
			INSULATOR	TEFLON	WHITE
			BODY	BRASS	NICKEL
			BODY	BRASS	NICKEL
			SHELL	BRASS	NICKEL
			NO. DESCRIPTION	MATERIAL	FINISH